
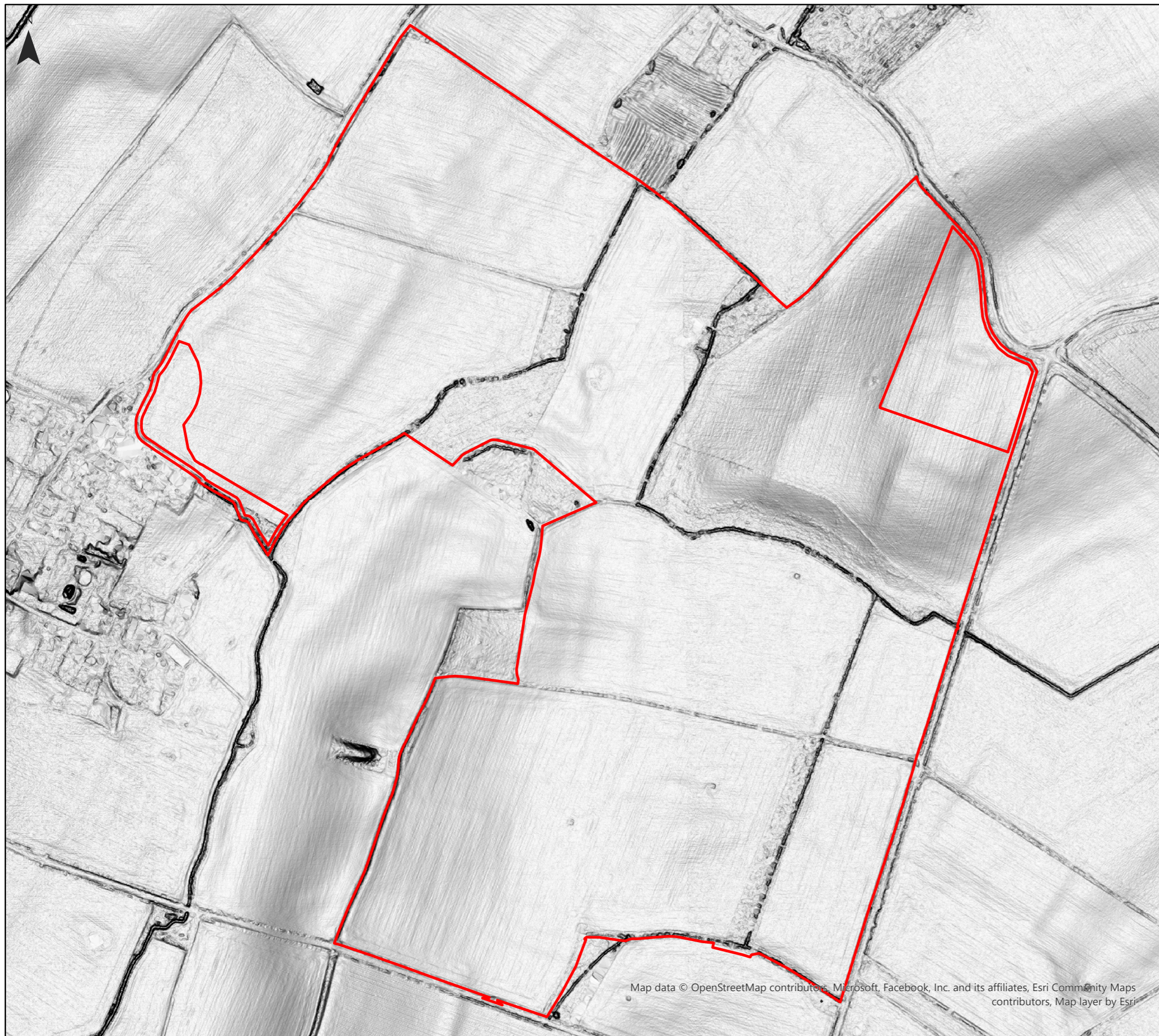


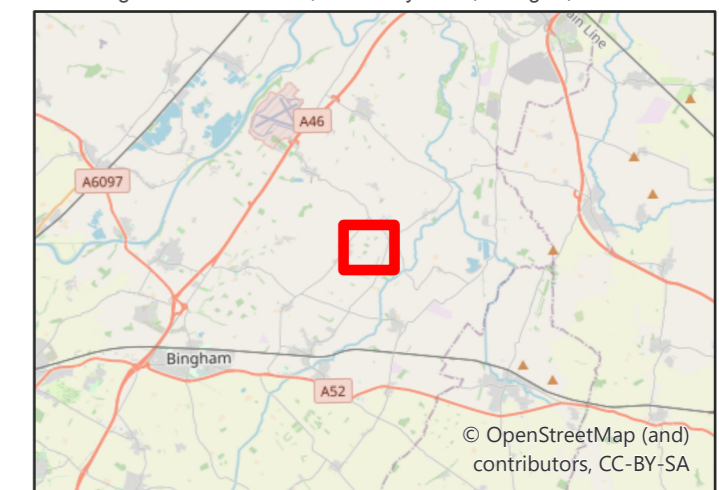
Longhedge Solar Farm Lidar Data (1m DTM) Figure 3.6

Key

 Development Boundary



Neo Office Address:
Wright Business Centre, 1 Lonmay Road, Glasgow, G33 4EL



Map data © OpenStreetMap contributors, Microsoft, Facebook, Inc. and its affiliates, Esri Community Maps contributors, Map layer by Esri

0 200 400 800 Metres

Date: 07/09/2022
Drawn By: Michael Briggs
Scale (A3): 1:5,500
Drawing No: NEO00782/0061/C

